



Invitation to EFRA Large Scale GP Touring Car and F1

**Midtsjællands Mini Racing Club
And
Næstved Mini Racing Club
Denmark**



Invitation

Track: Ålestok Banen, Ålestokvej 7, DK-4700 Næstved.

Classes: Large Scale Touring Cars and F1.

Rules: EFRA

Race Director: Bo Pyskow (bo1@pyskow.dk)

Referee: Søren B. Sørensen and Michael Iissau

Race Control: Nicolai Heilbuth and Nicolai Nielsen

Technical Inspection: TBA

Speaker: David Church.

Race registration: [http://www.myrcm.ch/myrcm/main?pLa=en&hId\[1\]=com&dId\[E\]=23549&pId\[E\]=6](http://www.myrcm.ch/myrcm/main?pLa=en&hId[1]=com&dId[E]=23549&pId[E]=6)

Entry Fee: 300DKK or 40 €

Practice Fee Thursday the 5th May: 100DKK or 15€

Camping: 100DKK or 15€ Pr. Unit Pr. Day. Including toilets, shower and power.

Only notes are accepted if you are paying with Euros.

Program:

Date	Time	Program
Thursday 5h may	09:00 - 21:00	Free practice. Note that the track is closed from 13:00 to 14:00
Friday 6th May	09:00 - 21:00	Free practice. Note that the track is closed from 13:00 to 14:00
Saturday 7th May	08:00 - 17:00	Controlled Practice and Qualifications
Sunday 8th may	08:00 - 16:00	Finals.

General Information:

VERY IMPORTANT Passports: All foreign drivers must to remember their passports as the Danish Police are doing checks at the border.

Please keep an eye on <http://gp16.nmrc.dk> for additional information.

Food and Beverages will be available at the track.

Gas Station to be used:

StatOil

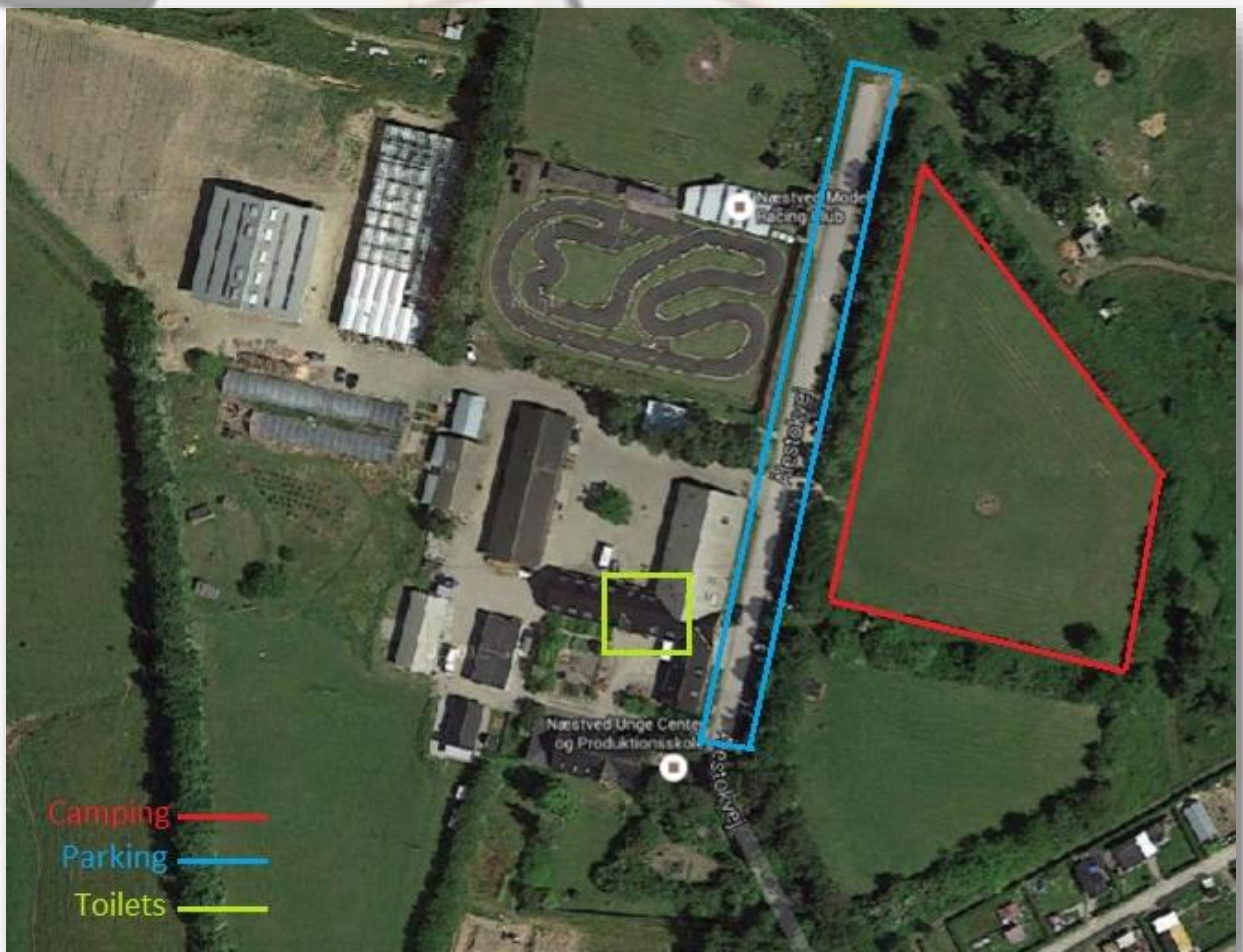
Karrebækvej

4700 Naestved

MMRC and NMRC are looking forward to see you all for a weekend of great fun and world class racing

The Track

Length of the longest circuit:	320 m
Track width at widest:	5,50 m
Track width at narrowest:	4,50 m
Direction of racing:	Anti-clockwise
Drivers Stand:	10 Drivers
Start Grid:	10 positions
Facilities:	
Pitlane – Drivers platform – Air compressors - Paddock with 230VAC – Camping area – Toilets/bath facilities – Race control room – Technical Inspection Area	



The Track



Drivers Stand: 10 drivers



Paddock: 80 - 100 drivers



The Track



Location

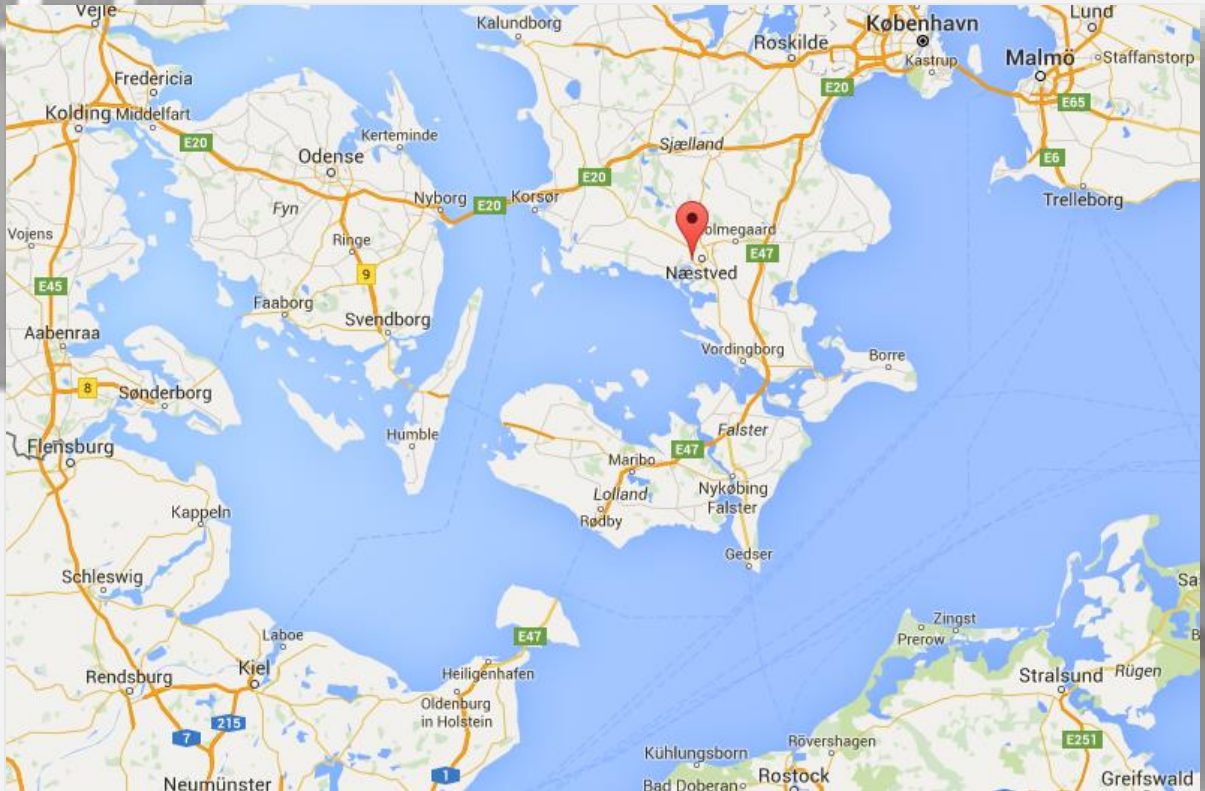
Aalestokvej 7 - 4700 Næstved – Denmark

Copenhagen Airport - 90 km

Rostock/Gedser (Ferries from Germany) – 90 km

Puttgarden/Rødby (Ferries from Germany) – 100 km

GPS Location: 55.220199 -11.723238



Accommodation

Hotel Vinhuset

www.hotelvinhuset.dk

Danhostel Næstved

www.danhostelnaestved.dk

Hotel Menstrup Kro

www.menstrupkro.dk

Enø Camping

www.enoe-camping.dk

Danland

www.danland.dk

Camping area

At the racetrack there are approx 80 – 100 camping spots with:

220V – Toilets – Showers - Wifi – Etc.



ELECTRICITY

Paddock table/ Camping area has 230V power

Please note the correct type of EU power outlets

Campers must bring their own power extension cords!



PARTNERS



<http://www.visitnaestved.com/In-int/naestved/tourist-startpage>

CONTACT

Race Director
Bo Pyskow
Mail: bo1@pyskow.dk
Speaking English and German